



ULTRA-SPAN®

LIGHT GAUGE STEEL TRUSS SYSTEM



Why use light gauge steel trusses?

Is your roof too large to be done in pre-fabricated timber or are you shipping roofs into Africa and paying dearly for transport? Maybe you wish to supply low-cost roofs or simply prefer non-combustible roof structures? Whatever your need – **Ultra-Span®** offers the solution!

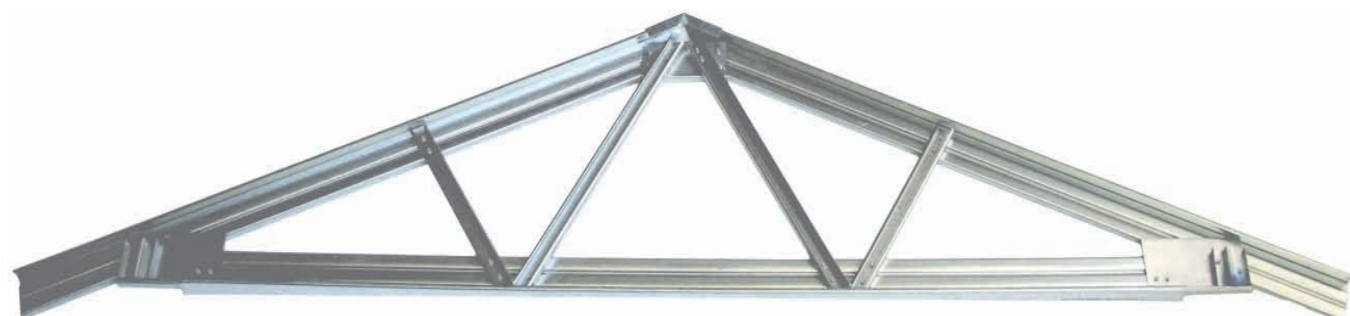
MiTek Industries South Africa (Pty) Ltd, the world's leading provider of connection solutions to the wood component industry, is proud to present the **Ultra-Span® Light Gauge Steel Truss System**.

Your local **MiTek** licensed fabricator can provide you with design and pricing information on **Ultra-Span®** utilizing state of the art **MiTek 20/20®** software, alternatively your **MiTek** regional offices will gladly assist.

Ultra-Span® trusses can be supplied in "kit-form" (low-cost housing or other remote projects) whereby trusses are assembled on site (contributing to local skills transfer and employment), or in pre-fabricated form ready for installation on the roof.

Advantages of the **Ultra-Span®** light gauge steel truss system:

- Elegant simple system, with all members straight and true for a level roof.
- Span capability from small low-cost to large 40m clear span commercial structures.
- Longevity of product due to galvanized coating plus inherent properties of non-combustibility, resistance to borer and fungus attack.
- Lower weight reduces transportation costs, improves handling and erection.
- Ease of truss manufacture with screws and electric fixing tool directly on site or in factory conditions.



ULTRA-SPAN®

LIGHT GAUGE STEEL TRUSS SYSTEM

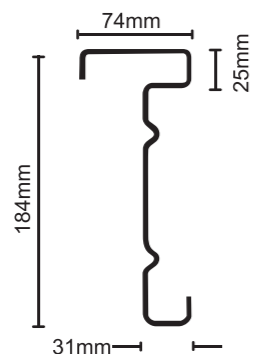


MiTek Industries South Africa (Pty) Ltd

MiTek Park
754 16th Road
Randjespark Ext 34
Halfway House 1685
Midrand
Web Site: www.mitek.co.za

Telephone +27 (0)11 237 8700
Facsimile +27 (0)11 237 8700
Cape Town +27 (0)11 237 8700
Durban +27 (0)11 237 8700
Port Elizabeth +27 (0)11 237 8700



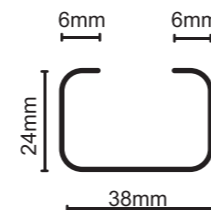


CHORDS

USC184 X 1.9

184mm Chord in 1.9mm Steel
(Suitable for very large spans/girders)

Weight:
5.69kg/m

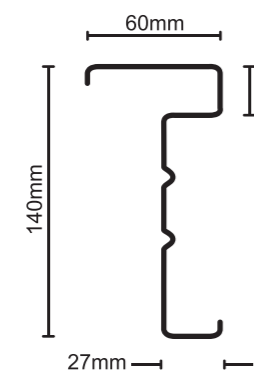


WEBS

USW38 X 0.8 or 1.0

38mm web in 0.8mm or 1.0mm Steel

Weight:
0.61kg/m and 0.76kg/m respectively

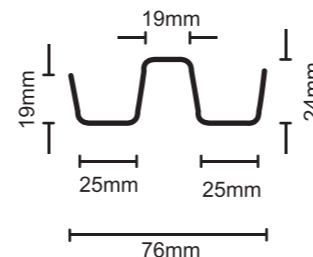


CHORDS

USC140 X 1.2 or 1.6

140 mm Chord in 1.2mm or 1.6mm Steel
(Suitable for large spans/girders)

Weight:
3.04kg/m approximately

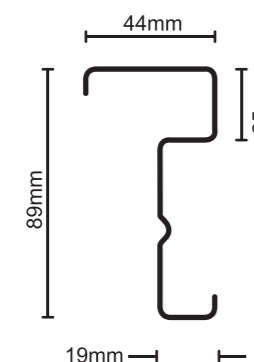


WEBS

USW76 x 0.8 or 1.0 or 1.2

76mm web in 0.8mm, 1.0mm and 1.2mm Steel..

Weight:
1.01kg/m, 1.12kg/m and 1.35kg/m respectively

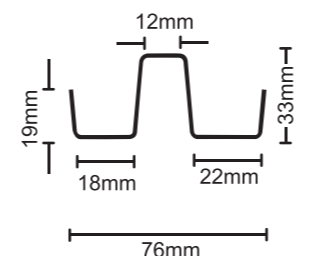
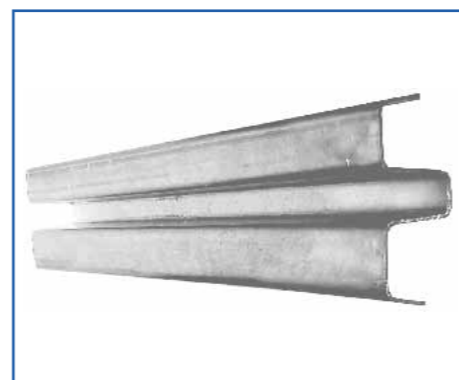


CHORDS

USC89 X 1.0 or 1.2

89 mm in 1.0mm or 1.2mm Steel

Weight:
1.44kg/m and 1.73kg/m respectively

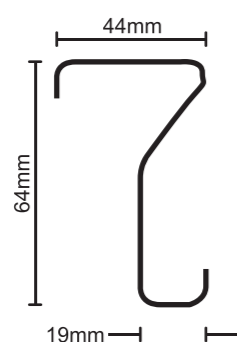


WEBS

USW76 x 1.6

76mm 1.6mm Steel.
(Unsymmetrical profile for stacking.)

Weight:
1.8kg/m



CHORDS

USC64 X 0.8 OR 1.0

64mm Chord in 0.8mm or 1.0mm Steel

Weight:
0.90kg/m and 1.13kg/m respectively

FIXING SCREWS AND SOCKETS



USSTS10X22



USSROOFZIP12X50



USSTS8X70



USSKTS12X20



USMAG1/4



USMAG5/16



USMAG3/8



ROOFTILE SCREW
MAG SOCKET



TRUSS TO TRUSS CONNECTIONS



eCo Steel PURLIN / BATTEN



CEILING BRANDING OPTIONS